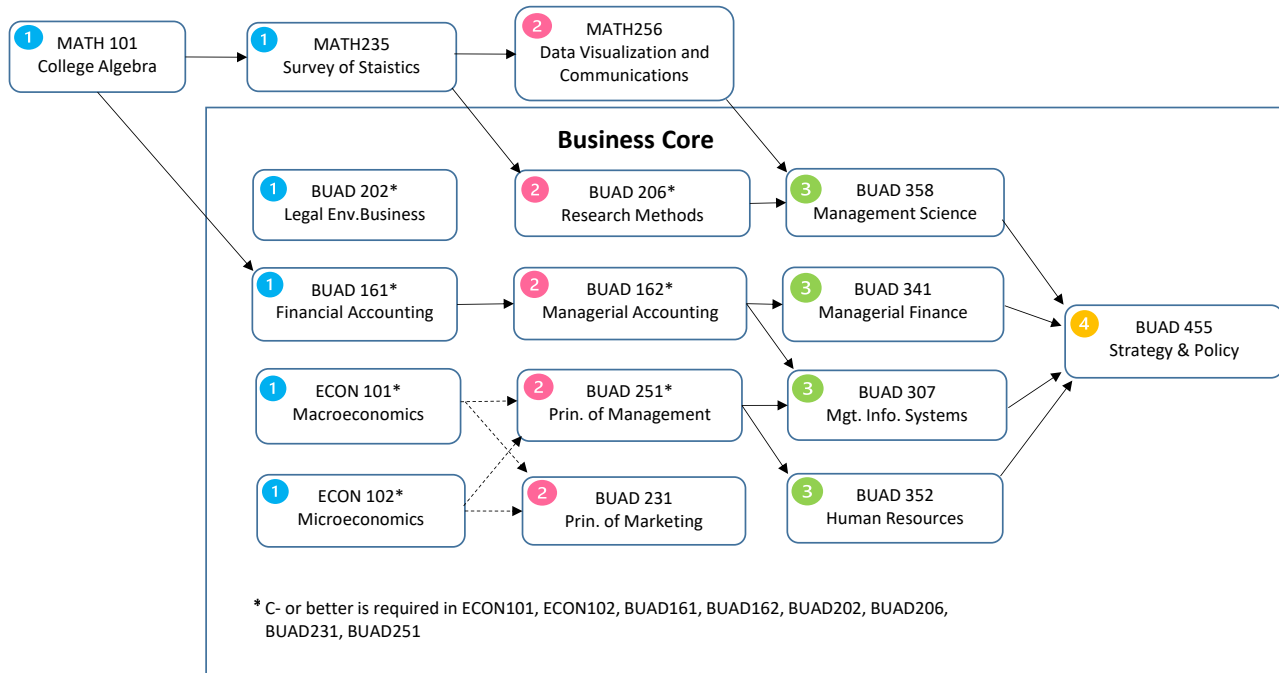


BS Business Administration (International Option) Curriculum Flowchart



Upper-level major courses

3 INTB321
Intro. to Intl. Business

Three of the following four International Electives:

- 3** ECON325 - International Economics (Spring)
- 4** FIN344 - International Finance
- MGMT357 - International Management (Fall, Spring, Summer)
- MKTG435 - International Marketing (Fall, Spring, Summer)

One of the following Courses:

- ANTH121 Cultural Anthropology,
- GOVT251 Intro to Global Politics,
- GOVT351 International Law,
- GEOG222 Economic Geography,

3 **Three Departmental Electives:**
4 **Can include up to six internship/CO-OP credits, and is waived with a completed minor.**

Business Core Prerequisites:

BUAD161 - MATH101 or 151MPT

BUAD162 - BUAD161*

BUAD206 - MATH151, MATH235

BUAD231 - Recommended (ECON101*, ECON102*)

BUAD251 - Recommended (ECON101*, ECON102*)

BUAD358 - MATH151, MATH235, BUAD206

BUAD341 - ECON101*, ECON102*, BUAD161*, BUAD162*

BUAD352 - BUAD251*

BUAD307 - BUAD251*, BUAD162*

BUAD455 - BUAD307, BUAD341, BUAD352, BUAD358

- 1** These classes are typically taken during the freshman year.
- 2** These classes are typically taken during the sophomore year.

- 3** These classes are typically taken during the junior year.
- 4** These classes are typically taken during the senior year.