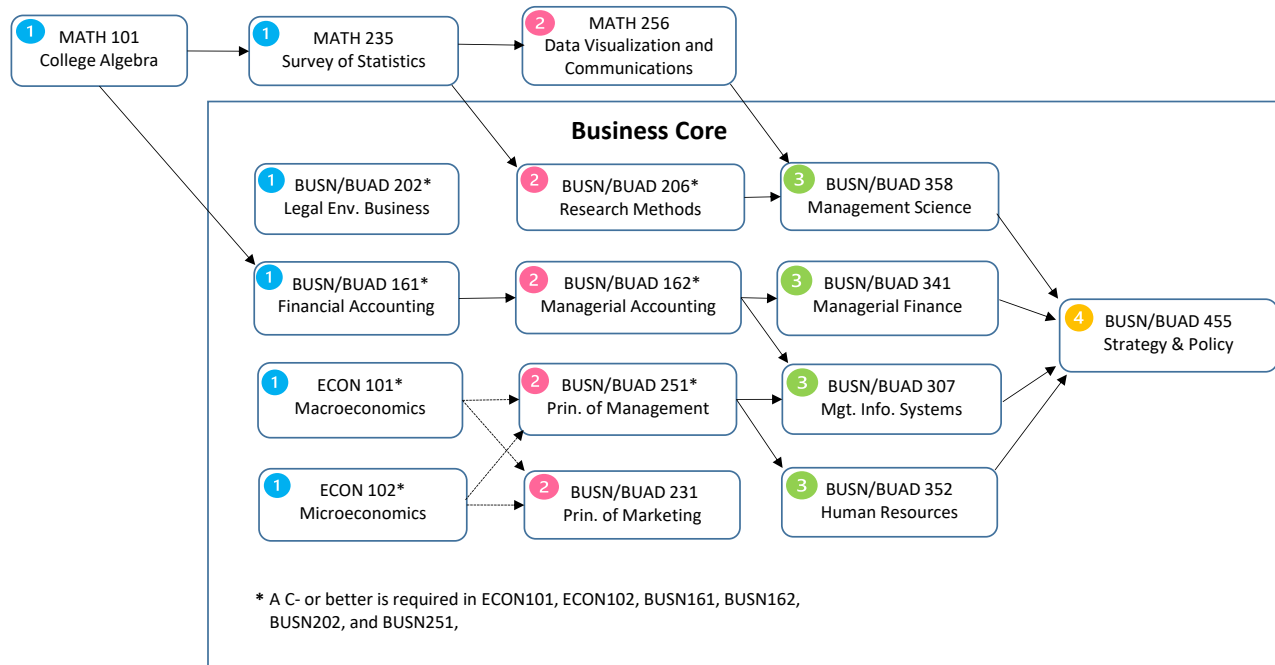


BS Management Curriculum Flowchart (HR Concentration)



Business Core Prerequisites:

BUSN161 - MATH101 or 235MPT
 BUSN162 - BUSN161*
 BUSN206 - MATH235
 BUSN231 - Recommended ECON101*, ECON102*
 BUSN251 - Recommended ECON101*, ECON102*

BUSN358 - MATH235, BUSN206
 BUSN341 - ECON102*, BUSN161*, BUSN162*
 BUSN352 - BUSN251*
 BUSN307 - BUSN251*, BUSN162*
 BUSN455 - BUSN307, BUSN341, BUSN352, BUSN358

- 1 These classes are typically taken during the freshman year.
- 2 These classes are typically taken during the sophomore year.

- 3 These classes are typically taken during the junior year.
- 4 These classes are typically taken during the senior year.

3 4 **Upper-level major courses**



Management Course Prerequisites:

MGMT353 - BUSN352
 MGMT354 - BUSN352
 MGMT357 - BUSN251*
 MGMT372 - BUSN251*
 MGMT373 - BUSN251*
 MGMT374 - BUSN251*
 MGMT452 - BUSN251*, MATH235
 MGMT454 - BUSN352