

# Does Your Project Require an Application to the Millerville IRB Office?

## Decision Tree #1

**Will you, a member of your research team or a collaborator observe, interact with, or intervene with individuals to gather information that will be used for research?** Examples:

- Surveys, questionnaires, focus groups, interviews
- Games, experiments in physical or in electronic environments
- Physical or biomedical procedures – imaging, scanning, blood collection, anthropomorphic procedures
- Diet, nutrition studies, taste tests
- Studies examining effectiveness of educational tools or curricula
- Use of instruments or devices, including phones, to collect data or monitor or influence behavior
- Passive observation of public behavior (in physical or online environments, including social media)
- Studies examining individuals' responses to manipulation of their physical or online environment
- Another activity that involves observation of, or interaction with, individuals to gather information for research

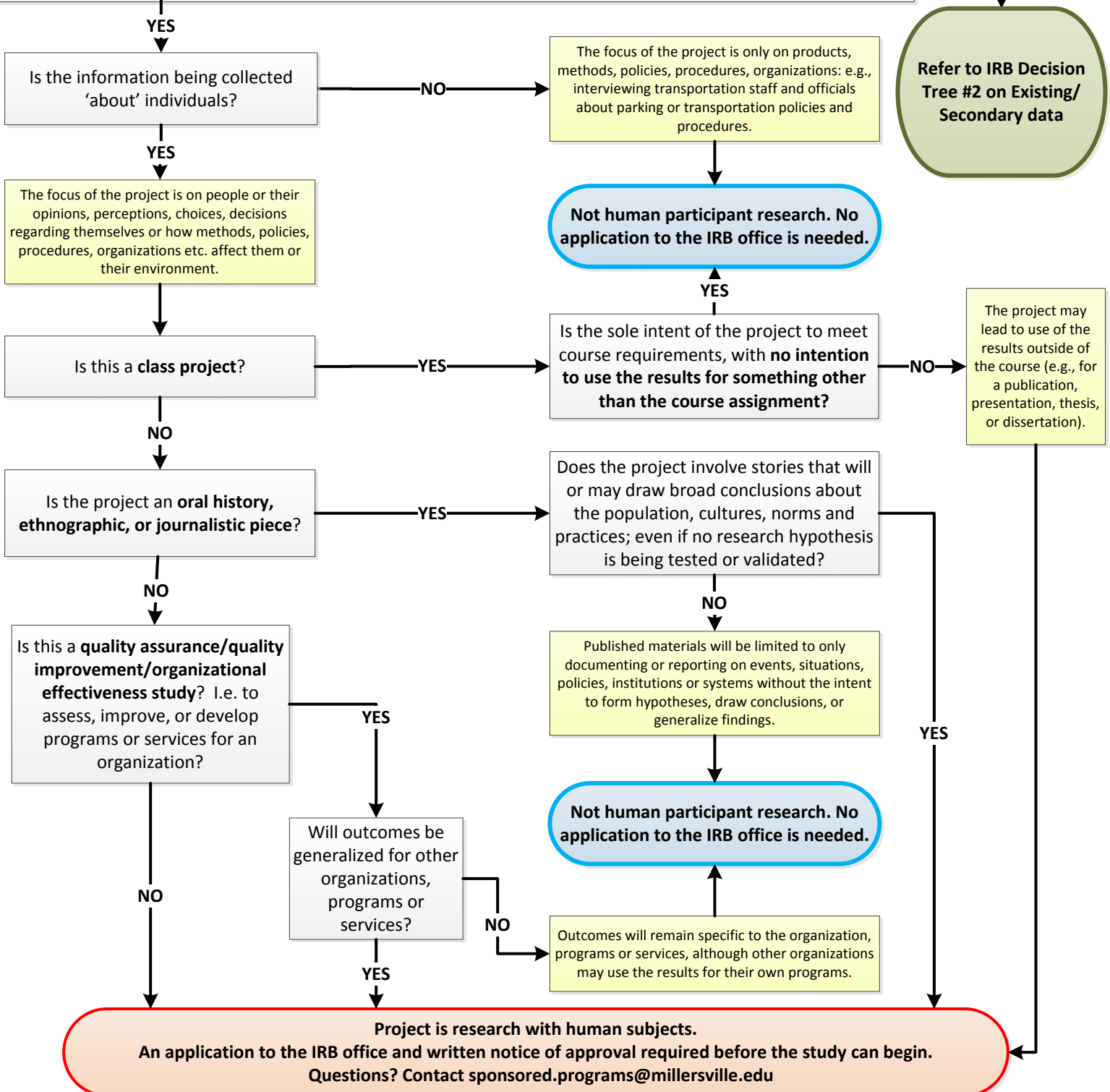
**NO,  
research will use  
only existing data**

**Refer to IRB Decision  
Tree #2 on Existing/  
Secondary data**

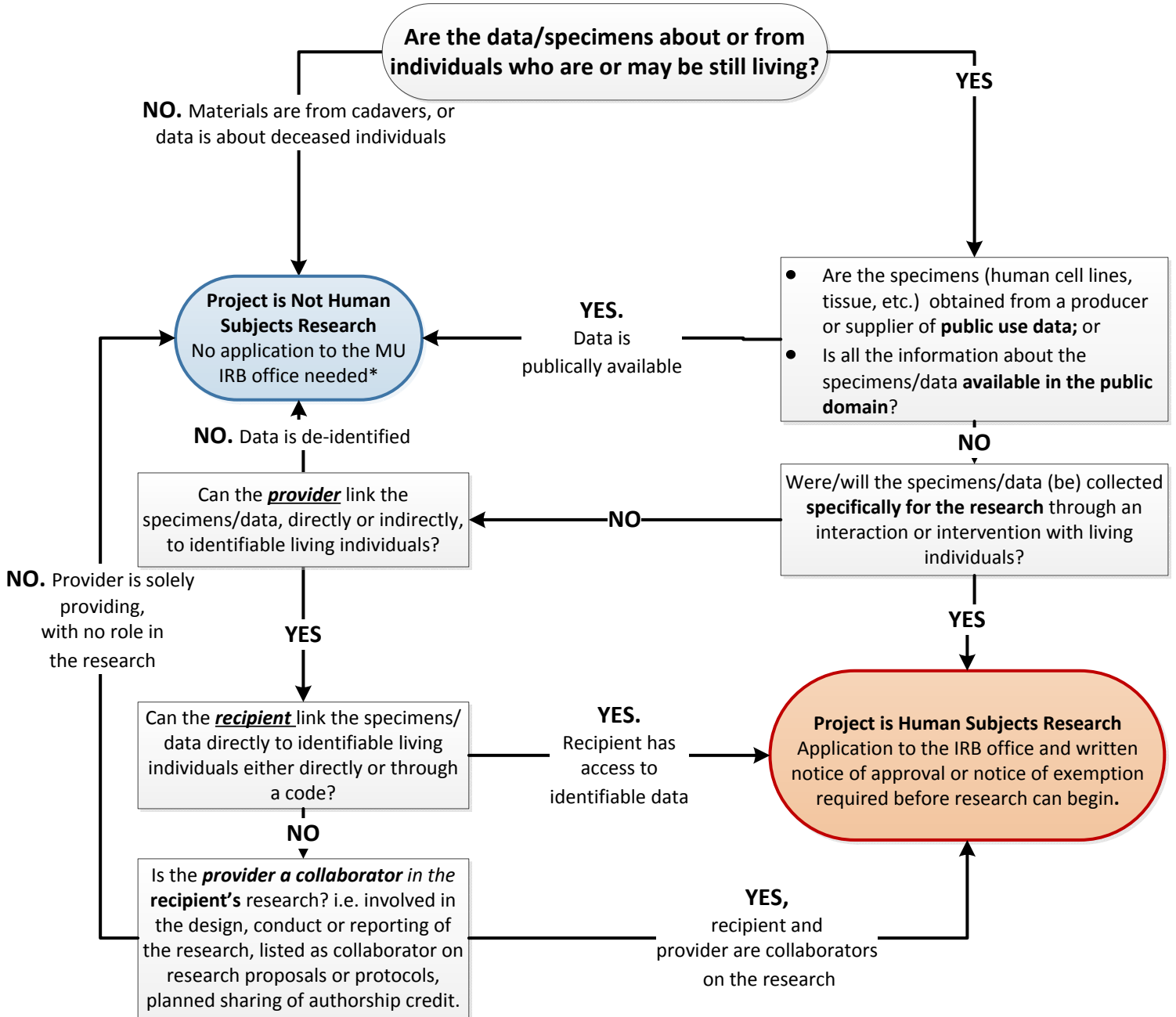
**Not human participant research. No  
application to the IRB office is needed.**

**Not human participant research. No  
application to the IRB office is needed.**

**Project is research with human subjects.  
An application to the IRB office and written notice of approval required before the study can begin.  
Questions? Contact [sponsored.programs@millersville.edu](mailto:sponsored.programs@millersville.edu)**



**Does Your Research Involving Secondary or Existing Data, Documents or Biological Specimens Require Review by the Millersville University IRB Committee?**  
**Decision Tree #2**



\*Contact the MU Office of Sponsored Programs ([www.millersville.edu/spra/irb](http://www.millersville.edu/spra/irb)) if acquiring the data requires a Data Use Agreement or a Materials Transfer Agreement between the provider and recipient.

**Reference:**

“Research Involving Private Information or Biological Specimens Flowchart”, National Institute of Health (NIH), January 2006, <https://grants.nih.gov/grants/policy/hs/PrivateInfoOrBioSpecimensDecisionChart.pdf>