

Millersville University **IMAGINE** NEWSLETTER

“IMAGINE” is Millersville’s e-newsletter for friends of the University. Its goal is to share stories demonstrating the diversity of student learning experiences on campus while emphasizing the positive impact that private support makes in the lives of our students. As you will read, everyone can make a difference when we “Imagine the Possible.”

Revitalizing **Two Campus Ponds for the Future**

Millersville University Pond Restoration and Celebration with Swan Drop Event

At the center of Millersville University’s 250-acre campus is the beautiful and historic pond, which has become a picturesque campus landmark with a special place in the hearts of many members of the Millersville University community. The lovely natural setting of the campus pond/lake evokes nostalgic feelings for many alumni who share treasured memories of time spent at the pond over the years. The scenic pond area continues to provide a relaxing outdoor space where students come to study and gather with friends. Miller and S’Ville, the University’s two resident swans, make their home at the pond, along with various wildlife species.



Continued on page 2



ON THE INSIDE

- 1** **CAMPUS POND RESTORATION**
Revitalizing Two Campus Ponds for the Future
- 4** **STUDENT SPOTLIGHT:** Emily Holmberg '21
- 5** **ALUMNA ESTABLISHES SCHOLARSHIP ENDOWMENT** with the Millersville University Foundation for Women in Business
- 6** **CREATING A LEGACY** | Divine Nine & Cultural Greek Council Unity Plots on Memorial Walkway
- 11** **TRADITION AND TRANSFORMATION** | Brooks Hall to Become Home for Lombardo College of Business
- 12** **LIGHTS, CAMERA, RENOVATION!**
Upgrades Planned for Broadcast Studio Space



Currently, an algae bloom in the pond water has created a critical need for restoration to maintain a healthy habitat. Financial support is an essential element in the pond restoration effort, and there is a need for donations from the Millersville University community to contribute to the vital improvements at the pond. In response to this need, Millersville University is introducing an exciting special event with the **Swan Drop** this fall at Homecoming 2021.

The Swan Drop event will take place on Saturday, October 16, 2021, as part of the University's Homecoming festivities and will highlight the campus pond

restoration. To represent Millersville's campus swans, the Swan Drop event will feature rubber swans that will be dropped from a crane onto a target on the nearby Brooks Field. The swans closest to the center of the target will win prizes, and the funds raised by the event will benefit the pond revitalization project.

Everyone is welcome to participate in the Swan Drop by making a gift to receive a rubber swan that will be included in the momentous Homecoming event. Donors will receive one rubber swan in the Swan Drop with a gift of \$10, with opportunities to receive greater numbers of rubber swans, including a Drift (5 swans) or a Regatta (10 swans), with gifts of larger amounts. Additionally, there is an opportunity for donors to receive personalized pavers to be installed and displayed around the pond, providing a perfect way for donors and friends to commemorate fond memories from Millersville University.

Continued on page 3

Reflections of Pond Memories from Generous Donors

"I have a lot of good memories with this pond. I am glad to know I can be a part to help it stay wonderful for the animals and everyone else."

– Sarah Miles

"My wife and I met at Millersville, graduated and have been happily married for 23 years now. The pond was always special to us and was where I proposed to her at the gazebo."

– Mike '97 and Wendy '98 Brubaker

"The pond was absolutely always my favorite place to go to on campus. I was fortunate to get to walk by it almost every day on my walk to Stayer Hall. Hanging by the pond with friends while watching Miller and S'Ville are memories I'll always remember!"

– Lexi Kozin

MAKE A GIFT
to participate in the Swan Drop!

Gifts to the Swan Drop will provide essential funding to restore the campus pond and maintain a healthy habitat.

[CLICK HERE](#) to donate and learn more about the Swan Drop event.

On-Campus Field Station at *Roddy Pond*

Will Enhance Student
Learning Opportunities



RETNEW

Revitalization of campus wetlands at Millersville University includes updates and improvement needs at **Roddy Pond**, located adjacent to the science complex on Creek Drive. For decades, Roddy Pond has served as an outdoor laboratory for biology, earth sciences, chemistry and geography courses. This aquatic facility has allowed Millersville University students to study the water chemistry, vegetation, as well as inventory the terrestrial and aquatic organisms living in and around the pond. University and department honors students have expanded their research horizons at Roddy Pond by having access to a freshwater system that has served as a focal point for student thesis research. Additionally, the pond and the surrounding area have provided a convenient on-campus resource for faculty research.

Presently, Roddy Pond serves as a freshwater wetland and habitat for a multitude of invertebrate and vertebrate animals, including a very unique species of freshwater jellyfish. Roddy Pond has a variety of important ecological benefits, including serving as a filter for any runoff of nearby impervious surfaces, resulting in a reduction in sediment/nutrient loads to Ford's Run and the Conestoga River, and providing a clean water source for many organisms, especially pollinating insects. Supporting the survival of migratory species is another valuable impact of Roddy Pond, as it provides an intermediate point for migratory species to feed and rest during spring and fall migrations.

A current challenge at Roddy Pond is that the pond has unhealthy oxygen levels for organisms to survive. To enhance hands-on student learning opportunities, there is a current need to upgrade and maintain Roddy Pond, and to establish an on-campus field station. An upgraded facility could include the renovation of the pond itself and the surrounding area, including the installation of docks and field stations.

Academic benefits of an upgraded facility could allow a greater number of students and faculty to conduct class studies and empirical research at Roddy Pond. Enhancing the area would provide an aesthetic improvement to the campus landscape, and through the renovation effort, Roddy Pond could become a campus area visited by prospective students and their parents, visitors and the campus community.

New opportunities from upgrades to Roddy Pond would positively benefit Millersville University students and the natural habitat in a variety of ways. The on-campus field station can expand the University's effort to train students in the next generation of careers. By upgrading and maintaining the pond, Millersville University can help to advance this effort toward the training of students for water-related and conservation careers, along with careers of the future that are yet to be identified. ◆

HONORS STUDENT EXPERIENCES STUDENT TEACHING *in Kindergarten Classroom During COVID-19*



Emily Holmberg '21 is a senior in the Honors College program with a major in early childhood education and minors in mathematics and Integrative STEM Education Methods. Holmberg has received a variety of scholarships, including being named as the 2020-2021 recipient of the Paul & Caroline Beideman Honors College Fellowship Endowment. Recently during the spring 2021 semester, Holmberg completed her student teaching field placement in a kindergarten classroom in the Penn Manor School District in Lancaster County. Holmberg's unique student teaching experience during the COVID-19 pandemic provided valuable lessons about the benefits and challenges of teaching in person and online. In reflecting on her student teaching field experience and on her student success journey, Holmberg shares highlights, accomplishments and her plans for the future.

Experiences and Insights: Student Teaching In Person and Online

"I feel fortunate to have gained experience teaching both in person and online in my student teaching placement. I teach in person most of the time, but I taught online for a few weeks.... From my experience, the students definitely learn better through in-person instruction than remote instruction, but both have their challenges with the limitations imposed by social distancing.

"Since my students are in kindergarten, they spend a lot of their school day engaging in a variety of activities that promote their fine motor development, but at home these activities become more limited because of the availability of resources.... My students are five- and six-years-old, so they rely on adults to help them manage the technology and complete their assignments. While in-person learning benefits the students by addressing these issues, it presents several challenges this year as well, because the students primarily work individually and cannot share materials. Therefore, they cannot engage in as much hands-on learning as they typically would. This also limits their socialization because they typically sit at their tables with plexiglass between them....

"This whole year has served as a lesson on flexibility and adaptability for everyone, and this holds especially true for teachers

and student teachers.... Flexibility and adaptability are two essential characteristics teachers must possess, as they constantly need to make changes to their instruction and plans to accommodate different situations that arise. Therefore, my experiences this semester are preparing me perfectly for the reality of the teaching profession."

Student Success Journey at Millersville University

"The Paul & Caroline Beideman Honors College Fellowship Endowment supported my success at Millersville because it has allowed me to pursue my passions and make the most of my college experience. Rather than working several jobs to help afford my education, the financial support from this scholarship made it so I could dedicate my time to becoming involved in several clubs, holding leadership positions, volunteering, taking extra credits each semester to earn two minors while still graduating in four years, and completing my honors thesis.

"My honors thesis provided me with the opportunity to explore a topic I am passionate about: the representation of women in STEM fields. It also led me to realize that I enjoy research, which I would not have known otherwise.... My greatest academic achievement by far was completing and successfully defending my

honors thesis, 'The Influence of Education on Children's Gender Stereotypes and Occupational Interests in STEM Fields.... Completing this research project also opened doors to present at conferences, which was extremely rewarding after the work I put into the project throughout the last two years.

"The field of education excites me, knowing that I have the potential to shape the future of our world through teaching the young students in my classroom. These children will grow up to become the future leaders of our society, and I love that as a teacher I can help them recognize and achieve their fullest potential.... I would love to teach in a second- or third-grade classroom in Pennsylvania, preferably in Lancaster or Chester County. In a few years, I hope to also continue my education and earn my master's degree while teaching." ♦

**MAKE A
DIFFERENCE**
through scholarships

Extraordinary students like Emily can pursue academic exploration and excel as citizens and community leaders with scholarship support.

[CLICK HERE](#) to learn more.



An investment in knowledge pays the best interest."

- Benjamin Franklin



Betty Luke '81

Alumna Establishes Scholarship Endowment

with the Millersville University Foundation for Women in Business

Elizabeth "Betty" Luke graduated from Millersville State College in May 1981. She earned a bachelor's degree in business administration with an economics minor. Following graduation, Betty spent over 32 years at HP Inc. in a variety of roles, retiring as a Global Account Manager last year. She has been engaged with Millersville University over the last several years and is a familiar face at the popular MU After Work alumni events.

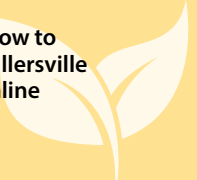
As Betty watched the costs for a college education increase over the last few decades, she saw that more and more students were faced with having to take out loans to afford an education. "The interest on loans ... prohibits many young people from pursuing their ambitions and dreams. Scholarships provide a path forward for young people who want to go to college but cannot afford it." Thinking back to her own experience, when Betty graduated from high school, she wanted to attend college, but like many families, her family did not have the resources to pay for college. As one of six children, Betty was responsible for paying for her own education. She was fortunate to receive some financial assistance while a student at Millersville. In addition to that assistance, she worked at Gordinier Dining Hall during the school year and had additional jobs while on breaks and during the summer, even adding a second job during her senior year to finish her degree. Betty shared, "I firmly believe in education and having a college degree. It made a difference in my life. I wanted to give back and decided to support future

young women in their educational pursuits in the Lombardo College of Business."

Earlier this year, Betty created the *Elizabeth A. Luke '81 Women in Business Award* to be awarded to two incoming freshman female students in the Lombardo College of Business with a minimum cumulative GPA of 3.0 and demonstrated financial need. The scholarship is renewable for up to three additional years, provided the student is making progress towards graduation and continues to maintain a minimum 3.0 GPA. By creating a scholarship endowment, Betty's gift is invested by the Millersville University Foundation and only the spendable income is awarded to students each year, ensuring that the scholarship will last in perpetuity, benefiting generations of Millersville students.

"I am an advocate for women. I know from personal experience the challenge of having to work and pay for my college degree. I believe it's important to make a difference. I hope the future recipients of my scholarship will change the world as successful young women business leaders. They are the future." ♦

If you are interested in learning more about how to create a **scholarship endowment** with the Millersville University Foundation, you can learn more online at www.millersville.edu/give or contact the Development Office at 717-871-7520.





Alumni Reflect

ON INSPIRATIONAL LEGACY OF NEW CAMPUS LANDMARK

Divine Nine & Cultural Greek Council Unity Plots on Memorial Walkway Construction Is Almost Complete

Less than two years ago, during the 2019 Homecoming weekend, the Millersville University campus community and cultural Greek organizations celebrated the beginning of an important project to commemorate the rich history of the nine Greek sorority and fraternity organizations included in the National Pan-Hellenic Council, Incorporated (NPHC), plus Greek organizations of the National Multicultural Greek Council Inc. (NMGC) and the National Association of Latino Fraternal Organizations, Incorporated (NALFO) through the construction of the Divine Nine & Cultural Greek Council Unity Plots on Memorial Walkway. The Greek organizations of all of these groups combine to form the Cultural Greek Council (CGC) at Millersville University, and the walkway includes 12 spaces representing the traditional Black Greek-lettered organizations and other Latinx fraternities and sororities.

As of this spring, construction is almost complete for the Divine Nine & Cultural Greek Council Unity Plots on Memorial Walkway, located along Shenks Lane, near the Student Memorial Center. Through a tremendous outpouring of donor support from many alumni members of the Greek organizations represented in the project, the fundraising campaign achieved incredible success. The generosity of more than 190 alumni and friends who donated to the project made the creation of the new area on campus possible. For alumni who supported this meaningful project, the construction of the walkway serves as an inspiration and fortifies the legacy of the Greek organizations that are represented in the campus landmark for the Millersville University community.

Continued on page 7

*Divine Nine & Cultural
Greek Council Unity Plots on
Memorial Walkway located
along Shenks Lane, near the
Student Memorial Center.*

HOMECOMING 2019

Dedication of Divine Nine & Cultural Greek Council
Unity Plots on Memorial Walkway



Photo Credit: Dr. Myava Clark '93



Denise Draper '80

Denise Draper '80

has been a member of Delta Sigma Theta Sorority Inc. at Millersville University since 1978, and served as an alumni advisor to the Lambda Gamma Chapter at Millersville for 30 years, until recently. When reflecting on the significance of the Divine Nine & Cultural Greek Council Unity Plots on Memorial Walkway for alumni, she states, "I don't know if they could have foreseen the beauty of what is being created, something that will be here for generations to come, that's huge. It's like going to a museum, knowing that there are certain artifacts that will be there long after you're gone.... For us as alumni, it's a legacy that is imprinted in a space that when we return, we know we are all a part of." As the new space on Memorial Walkway becomes a part of campus life, Draper expects many positive outcomes to arise throughout the Millersville University community and beyond. "I think the cooperation and the collaboration – alumni, undergrads and the University – demonstrates a partnership that will build dividends beyond belief."

Many alumni members from the Greek organizations were passionately involved in bringing the project to fruition at Millersville University through generous support for the fundraising campaign. "It means everything, which is evidenced by the fact we, in a very short period of time, raised thousands of dollars," says Draper. "When undergraduates look at alumni and they see this legacy, when they see that we not only talked about

Continued on page 8

supporting them, we demonstrated our support with our dollars.... the great thing about all of this is showing when given the opportunity, MU alumni rally together for worthy causes to make a difference."

Through her active involvement in Delta Sigma Theta Sorority, Incorporated as an alumni advisor, Draper has nurtured the success of members at Millersville University over the years. Delta Sigma Theta Sorority Inc. is one of the nine international Greek-letter sororities and fraternities of the National Pan-Hellenic Council Inc. (NPHC), which are collectively referred to as the "Divine Nine."

The Lambda Gamma Chapter of Delta Sigma Theta Sorority Inc. began at Millersville University in 1974, and Draper was president of the chapter from fall of 1978 until she graduated in 1980. As she explains, "Delta Sigma Theta Sorority, Incorporated at Millersville was a training ground for me to learn about leadership, to be involved in teamwork, and to experience mentoring, things which have carried through my career with State Farm Insurance Company."

In reflecting on the valuable role of Greek organizations for students and their communities, she notes, "Greek organization members hold dear their role after college and the ability to go back to their respective communities and tell other young people that a college education is a path worth pursuing. In addition this place of learning that builds leaders, those skills

we take with us and our communities benefit. Upon graduation we looked forward to going home or someplace new and sharing the information that college has many benefits. It is our mission to put into the hearts of others a college education can be within reach and it is a viable post-high school choice. Yes, we learned about leadership through our organizations, and we took our newfound abilities to the community, and we became members of committees and boards and we 'serve' and our experiences through these D9 organizations prepared us for those roles. Sorority and Fraternity life was a training ground to learn about leadership, to be in groups and committees on campus, to fellowship with each other and to emerge as leaders, and to take the things that we learned and the things that we felt were important back to the places we called home — our communities."

At Millersville University, the new space on Memorial Walkway will highlight the historical impact of the

Greek organizations and reflects a shared connection among members of the organizations that transcends generations. "The plot speaks to that history that is rich not only across Delta Sigma Theta Sorority Inc., but across each of these nine organizations of the Divine Nine and the other multicultural organizations that are part of this epic structure," says Draper. "For Divine Nine organizations and for the multicultural organizations that are a part of this space, it really demonstrates our collective unity, we stand together as multicultural students and students of color. We stand together as students that have a rich history very engrained in Millersville. Then to have the University rise to this level of commitment – it makes me emotional when I think about it. This was a huge undertaking that will stand as a recognition of what these organizations mean to the Millersville History and for that we all stand proud."

Continued on page 9



Members of the Lambda Gamma Chapter of Delta Sigma Theta Sorority Inc. celebrate their 45th Chapter Anniversary at Millersville University.

Divine Nine & Cultural Greek Council Unity Plots on Memorial Walkway located along Shenks Lane, near the Student Memorial Center.



Homecoming events at the University bring alumni from many Greek organizations together to reconnect and celebrate.

Derrick McCutchen '98

is a member of the Lambda Tau Chapter of Kappa Alpha Psi Fraternity Inc. at Millersville University and a member of the Millersville University Alumni Association Board of Directors. Kappa Alpha Psi Fraternity, Incorporated is included in the "Divine Nine" Greek-letter sororities and fraternities of the National Pan-Hellenic Council Inc. (NPHC), and has had an uninterrupted presence on campus at Millersville University since May 15, 1977, receiving its official charter at Millersville University on September 17, 1983. McCutchen was involved in Kappa Alpha Psi Fraternity Inc. at Millersville during the 1990s. "I would say fall of 1991 to spring of 1993 ... then roughly fall 1996 through fall of 1998. Also, for the past two years or so, I have been a member of the advisory team for the undergrad members," he explains. Through his involvement in the Lambda Tau Chapter of Kappa Alpha Psi Fraternity Inc. at Millersville, McCutchen experienced many valuable benefits that positively influenced his life. "Two things that come to mind in this regard. One... when I stepped on campus initially, I was very reserved, shy, and laid back. Meeting the members on campus and after I was initiated, I was able to mature and grow socially. Two...I would say the fraternity held me accountable while on campus and it continues to do so to this day. With our main motto being 'achievement,' Kappa



Derrick McCutchen '98

Alpha Psi always taught me work to be best and achieve in every field of human endeavor."

Regarding the construction of the Divine Nine & Cultural Greek Council Unity Plots on Memorial Walkway, McCutchen is proud and excited about the creation of the new space on campus and the positive impact it will make for students, alumni and the Millersville University community. McCutchen states, "I feel the plots will give the members on campus a greater sense of worth, pride and inclusion on the Millersville campus.... I look for the plots to serve as a meeting place for all alumni to meet and explore in the future when visiting campus. I hope it can serve as an inspiration to current students to look into joining these organizations. I hope they can serve to open up discussions to show all of the Millersville community the positive impact members of these organizations have brought to the Millersville community and to society as a whole."

Continued on page 10



Alumni members from the Lambda Tau Chapter of Kappa Alpha Psi Fraternity Inc. return to campus for Homecoming reunions.



Members of the Lazuline Chapter of Mu Sigma Upsilon Sorority Inc. by the campus pond at Millersville University.



Natacha Reyes-Fisher '13

Natacha Reyes-Fisher '13 is a member of Mu Sigma Upsilon Sorority, Incorporated and was active in the Lazuline Chapter at Millersville University from 2011 through 2013. Founded in 1981, Mu Sigma Upsilon Sorority Inc. is the nation's first multicultural Greek-letter sorority, and the Lazuline Chapter at Millersville University was established on November 12, 2005, by five diverse women. Involvement in Mu Sigma Upsilon Sorority Inc. at Millersville was a transformative experience for Reyes-Fisher. "Mu Sigma Upsilon has impacted my life in so many ways. I cannot thank MSU enough for the opportunities and friendships I have gained. It truly set me on the right path when I doubted myself and almost gave up on school. They provided me with a network for professional development when I was in need of a career path and academic support. I gained a lifelong sisterhood and best friends I never thought I could have."

As a member of Mu Sigma Upsilon Sorority Inc. and an alumna of Millersville University, Reyes-Fisher anticipates many positive outcomes to develop for alumni through the Divine Nine & Cultural Greek Council Unity Plots on Memorial Walkway. "When we return to visit Millersville for any event, such as for homecoming or our retreats, we can see our organization on display and reminisce on experiences and the challenges we pushed through to be where we are today personally and as an organization. This will now be a gathering space that will mark our history for our past, present and future members," she says. "This new space solidifies the role of our organizations and the impact we have on the university. We not only are underrepresented; we are leaders in our community and are making history."

In her career, Reyes-Fisher works in the field of higher education as an assistant director in undergraduate admissions at the University of Delaware. Through her professional experience, she recognizes the valuable benefits of the Divine Nine & Cultural Greek Council Unity Plots on Memorial Walkway for prospective students and the Millersville University community. "As I continue to work in higher education, I see current trends in enrollment. The diversity of each incoming class continues to increase," says Reyes-Fisher. "This walkway will be validating a space and will show those who are interested in attending Millersville that our diverse organizations have a presence. This area will have a tremendous impact for our community as our organizations continue to provide leadership and service in the areas we serve. Although our organizations are small, we are mighty. We are leaders on and off campus and can provide the community and the university with resources and services." ♦



The Lazuline Chapter of Mu Sigma Upsilon Sorority Inc. on campus in the Student Memorial Center.

Tradition & Transformation

Brooks Hall to Become Home for Lombardo College of Business



Photo circa 1938



Photo circa 2012

As the University implements a new strategic plan – Tradition and Transformation – there is perhaps no better project that fits this theme than the complete renovation and addition of Brooks Hall to house Millersville’s newest college, the Lombardo College of Business.

The future home of the Lombardo College of Business is envisioned to be a collaborative, inclusive campus space that brings together business, entrepreneurship and innovation. The space will host alumni, professional, and community events, and act as a hub to engage faculty, students, local companies, startups, nonprofits and government agencies. It will house

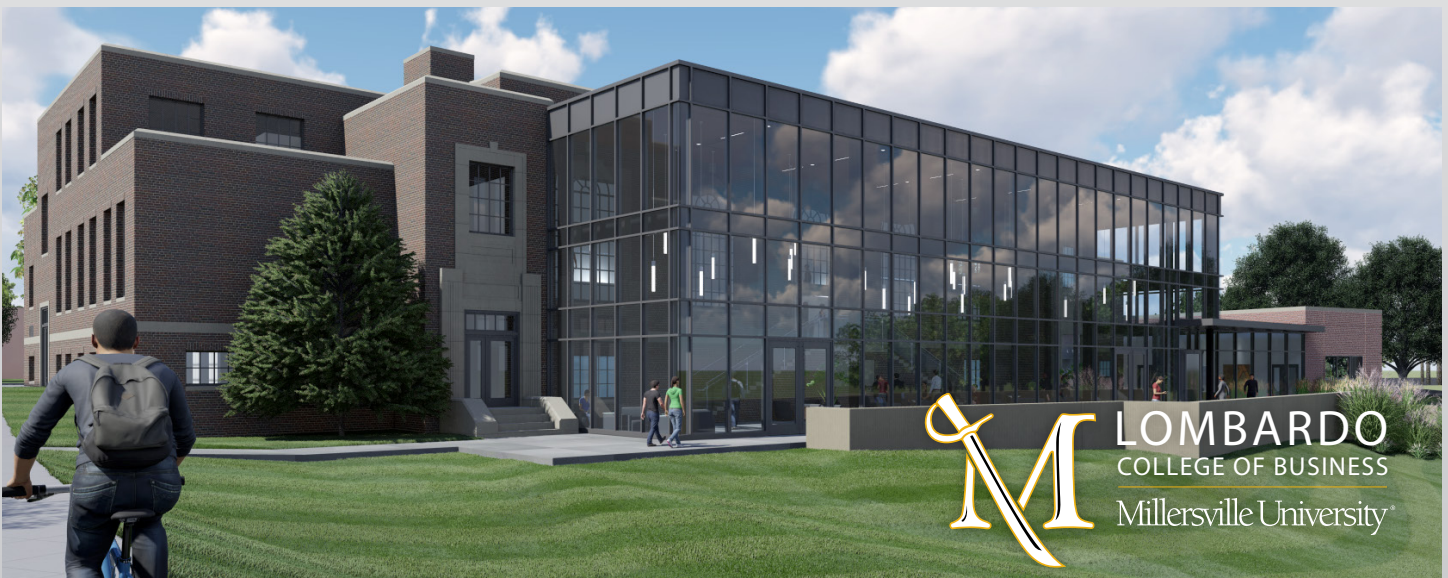
both traditional business programs like marketing, management, finance, and accounting and offer space for interdisciplinary offerings such as data analytics with flexible workspaces designed to foster creative transformation. The renovations will maintain the tradition and legacy of the building while incorporating the latest technology to allow this building to serve the needs of both current and future generations of students.

Brooks Hall was constructed in 1938 and served as the main athletics venue. Even after the construction of Pucillo Gymnasium in 1971, Brooks Hall continued to support athletic teams and intramural programs. Brooks Hall

was officially closed to the campus community in 2017.

While final plans are still coming together for the renovation of Brooks Hall, new spaces in the Lombardo College of Business will include Innovations Court, in the original location of the basketball court, which will be an open flexible space to host job and career fairs, events, presentations to the community and much more. In addition, it will include a business lab for the Marauder Fund and other student groups, an incubator space, student lounge, Brooks Hall Museum space, classrooms, student study areas and more. ♦

Please note that architectural rendering is for illustration purposes only.



SUPPORT CAMPUS REVITALIZATION

Transformation of campus locations like Brooks Hall can revive existing spaces with a renewed purpose for the future.

[CLICK HERE](#) to explore campus revitalization opportunities.



On campus at Millersville University, the television broadcast studio space in Bassler Hall plays an important role in the campus community and is utilized by many students, departments and student clubs for academic purposes, extracurricular activities and broadcasts of major campus events. Currently, there are several areas of renovation upgrades that are needed for the broadcast studio space. Completing the renovations to the broadcast studio will have a positive impact on Millersville University students by increasing hands-on learning opportunities and expanding technical experience and knowledge as students prepare for careers in broadcasting and media production.

The plans for the renovations will allow the broadcast studio to be more flexible, better acoustically isolated and possibly expanded. Students will have a modern facility closer to what they will experience in the broadcasting industry, with flexibility to create different sets and light them in the studio space. In addition to a new lighting grid and better sound isolation, capabilities for hanging trussing and other entertainment and lighting equipment will increase the flexibility of the space and provide students with real-world necessary rigging and safety knowledge. Students in any area of broadcast, entertainment, music or production technology will benefit from the upgraded studio space. The broadcast studio space in Bassler Hall will continue to house a broadcast control room, multi-track audio control room and flexible studios for learning and producing content.

The renovations will focus on a new support system to provide the necessary support for studio lighting and provide updates to isolate the studio from acoustic intrusions from rain, traffic noise and other sounds inside and outside of the building. New more environmentally friendly lighting power and control will also be installed to include use of LED lighting instruments, conventional lighting instruments, specials, and provide different control options for lighting.

Across the Millersville University campus community, the studio renovations will make a valuable impact. In academic courses, the Department of Communication and Theatre uses the studio for some production courses, as well as the meteorology program, which uses the studio every other year for their broadcast meteorology course. For student clubs and activities, the studio is used by the on-campus cable station MUTV, the National Broadcasting Society (NBS) and the Society of Motion Picture and Television Engineers (SMPTE). Major events on campus use the studio to help produce the on-campus and webcast feeds, including commencements, inaugurations and major speakers requiring multiple on-campus satellite locations.

The Bassler Hall studio renovations will benefit the campus community in many ways and provide students with firsthand experience utilizing the broadcast industry equipment and technology to prepare them for a rewarding and successful future. ♦

Millersville University

Office of Development

P 717-871-7520
 F 717-871-7899
 W millersville.edu/give
 Millersville University, P.O. Box 1002, Millersville, Pennsylvania 17551-0302